

Mac OS Laptop

Once you have selected **BYOD** you will be presented with the page as follows:

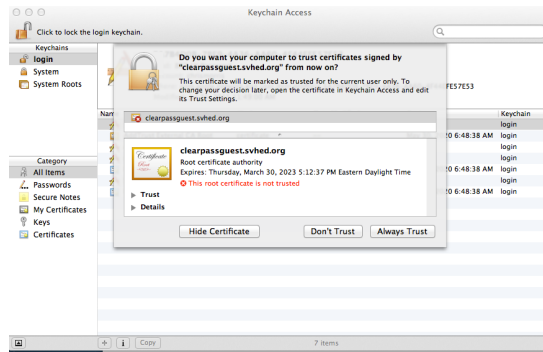


The screenshot shows the 'ClearPass Onboard' registration page. At the top, there is a header with the 'ARIBA networks' logo on the left and 'ClearPass Onboard' on the right. Below the header is the title 'Register Your Device'. A paragraph of text reads: 'Please configure security and network settings on your device to allow secure access to the internal network. Please follow the instructions listed below:'. A numbered list follows: 1. Install root certificate (click here), 2. Login below using your SVHEC credentials, 3. Install the certificate when prompted, 4. Go to your Wi-Fi settings and connect to SSID: SVHEC-BYOD. Below the list is a 'Register Your Device' form with fields for 'Username' and 'Password', both marked with an asterisk as required. A 'Log In' button is at the bottom of the form. Below the form, it says '* required field' and 'Contact a staff member if you are experiencing difficulty logging in.'

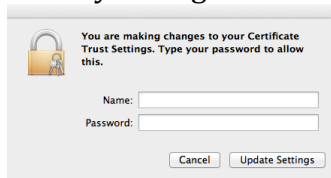
First click on **Install root certificate** if the file does not open automatically, click on your downloads folder and open the file **1.cer**.



When you open the file, a new window will be opened, and will ask you if you want your computer to trust certificates signed by "clearpassguest.svhed.org" from now on. Click on **Always Trust**.

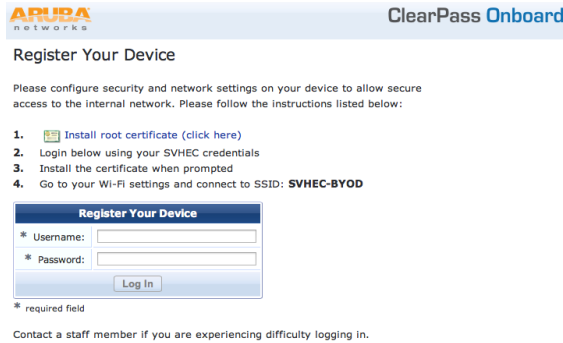


You will then be asked to provide your name and password. Please note, this is **NOT** your SVHEC login. This is your local account for your laptop. This is to allow changes to your certificate trust. Once you have entered your login information, click **Update Settings**.



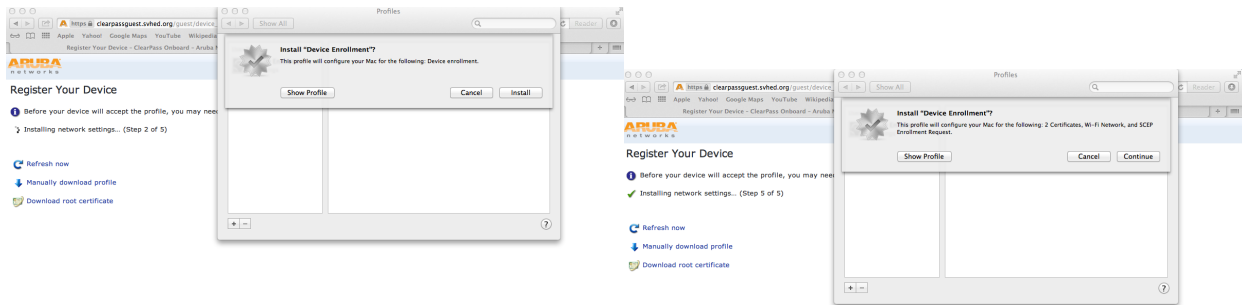
You can now close Keychain Access and return to your web browser. Once there, continue following the directions.

1. Enter your **SVHEC credentials**. This is the username and password that you use to log into the computers at the SVHEC.
2. Click **Log In**.



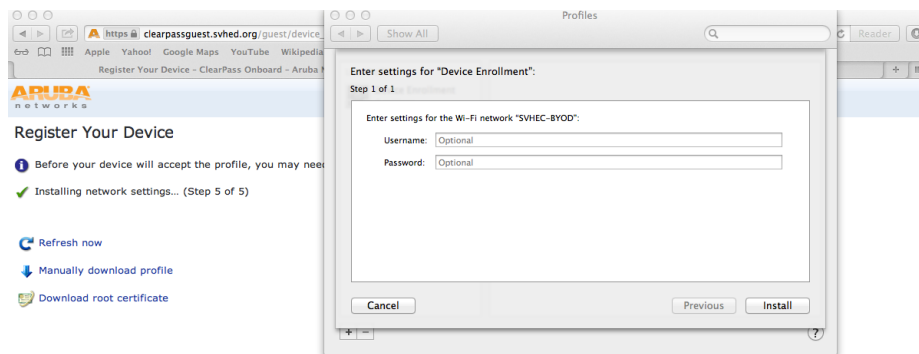
A new window will open called Profiles.

1. click **Install**.
2. When you asked if you want to Install “Device Enrollment” click **Continue**

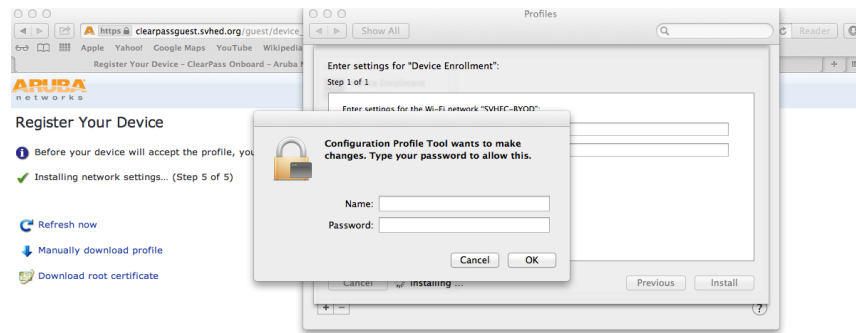


Next, you will be asked again for your SVHEC username and password.

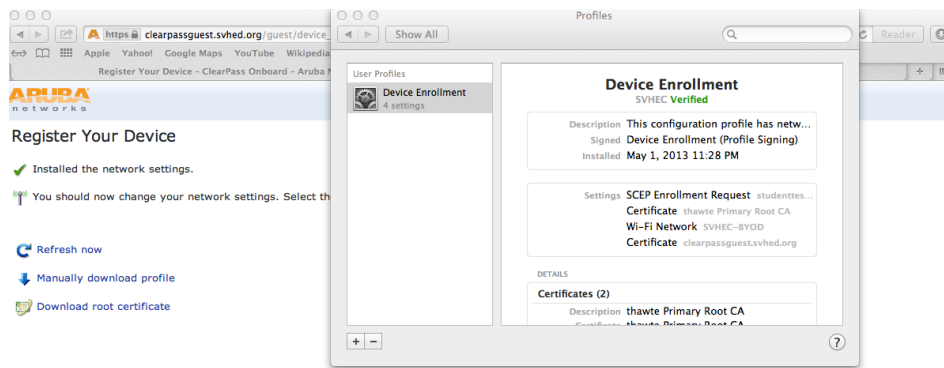
1. Enter the username and password you use to log into the SVHEC computers.
2. Click **Install**.



You will be asked for your name and password. Again, please note this is not your SVHEC login. This is your local laptop username and password. Once you have entered your login, click **OK**.

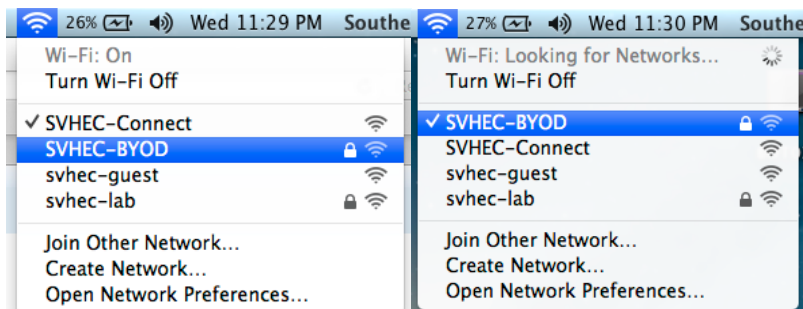


The next screen should show that the profile was installed. You can close this window.



You should now have a wireless network available called **SVHEC-BYOD**.

1. Click on the wireless icon next to your clock on the top bar.
2. Select **SVHEC-BYOD**
3. Now you should be connected to the SVHEC-BYOD network.



Next time you come to the SVHEC, make sure you connect to **SVHEC-BYOD**.