

Workforce @ SVHEC

workforce **FORWARD** 2011

a forum on education, employment, and economic development





workforce assessment & advancement

Nettie Simon-Owens, Director

Good Morning,

I am Nettie Simon-Owens, Director of Workforce Assessment and Advancement at the Southern Virginia Higher Education Center. We have a lot of exciting things going on here and we are grateful that you joined us today to find out more about the workforce and other initiatives of the SVHEC.

Workforce @ the SVHEC covers a broad range of local, regional, and even international efforts. At the SVHEC, workforce is about collaborating with various professionals and providers to meet current and emerging workforce/workplace needs of regional employers with a focus on improving workplace readiness and worker skills.

We know that today, more than ever, the skills of our workforce are critical. Productivity and profitability are impacted by worker skill levels. Increased skill levels are also commanded by new and emerging industries. Our employers need resources to develop their workforce, and our citizens, both employed and un-employed desire the ability to develop their skills making them more marketable for employment and promotion.

Next Slide

“**The most widespread, and arguably the most important, way in which higher education** institutions help support the competitiveness and growth of employers in their communities is through worker training programs.”

*A New Paradigm for Economic Development:
How Higher Education Institutions are Working to Revitalize
Their Regional and State Economies
The Nelson A. Rockefeller Institute of Government University
at Albany, SUNY (March 2010)*

workforce
FORWARD 2011

A recent report by the ***Nelson A. Rockefeller Institute of Government***, cited

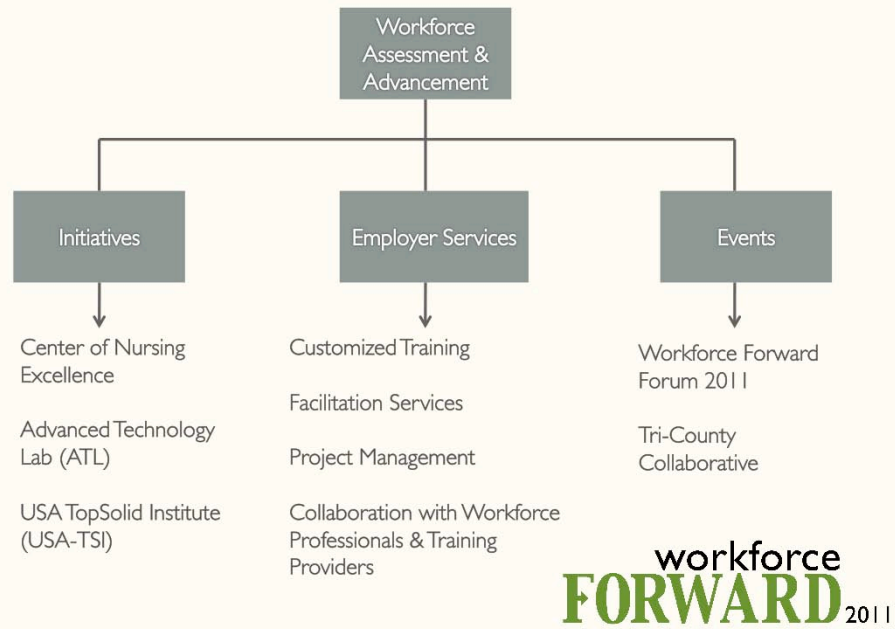
“The most widespread, and **arguably** the most important, way in which higher education institutions help support the competitiveness and growth of employers in their communities is through worker training programs.”

A New Paradigm for Economic Development: How Higher Education Institutions are Working to Revitalize Their Regional and State Economies The Nelson A. Rockefeller Institute of Government University at Albany, SUNY March 2010

Workforce development along with the appropriate services and training are critical to the future economic growth and vitality of our region. In our efforts to contribute significantly to the economic development of Southern Virginia, the SVHEC’s evolving workforce efforts are currently grouped into three areas as shown here:

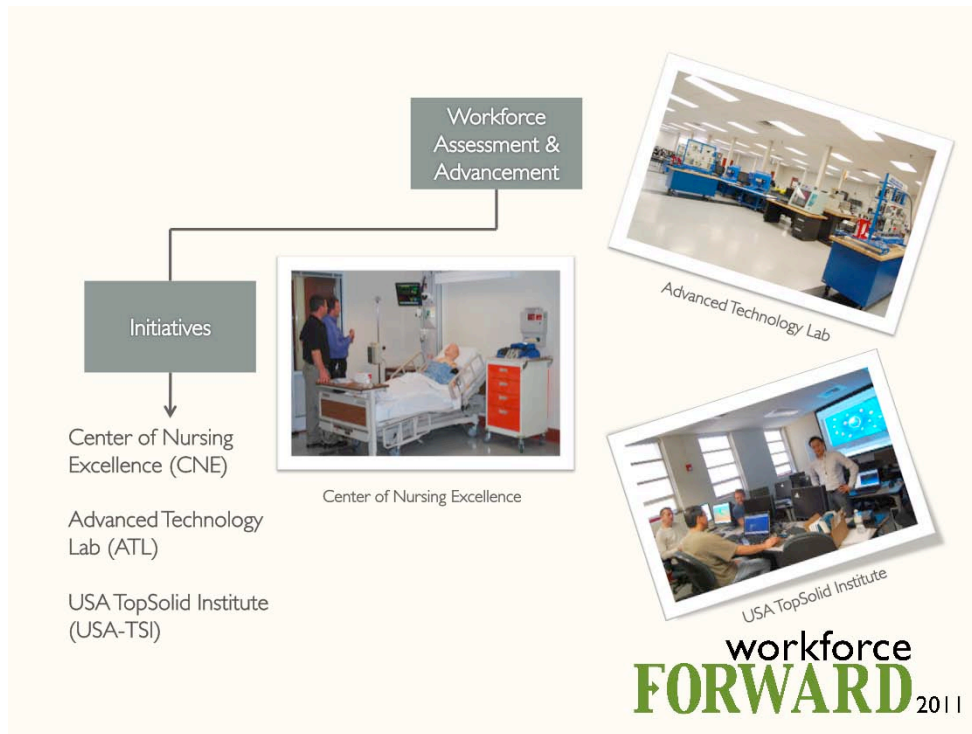
Next Slide

Workforce @ SVHEC



Our Initiatives
Employer Services and
Events

Next Slide



The Initiatives are the comprehensive programs and offerings operated by the SVHEC. They include:

- Center of Nursing Excellence
- Advanced Technology Lab
- USA TopSolid Institute

Let's look at each of these in further detail.

The CENTER OF NURSING EXCELLENCE – I won't say much about this initiative because our next presenter, Patricia Thomas will cover this area. However, I will say that the Center of Nursing Excellence was created to address the critical nursing shortage in our region and is designed to provide training opportunities and access to various sectors of the health care industry.

Our ADVANCED TECHNOLOGY LAB

The Advanced Technology Lab is used for business and industry training and consists of Amatrol and Lab Volt training modules.

The Amatrol modules provide industrial technology and controls systems training in the areas of mechanical and electrical maintenance, electronics, Programmable Logic Controls (PLCs), and pneumatics

The Lab Volt equipment is used for hands on training labs for Halifax County High School dual enrollment courses

We collaborate with Danville Community College & Southside Virginia Community College to deliver *employer specific* and *dual enrollment* offerings



We offer a variety of Services to employers in our region, including:

- Specialized/Customized Training –
- Facilitation Services -
- Project Management -

Much of what we do, we do in collaboration with other workforce professionals and training providers so that we can maximize available resources, avoid duplication of efforts, and reduce employer’s time to coordinate needed services.

When working with employers, we are able to help identify workplace and worker skill training needs, communicate and coordinate these needs with the appropriate providers, or develop training to meet the identified needs.

Next Slide



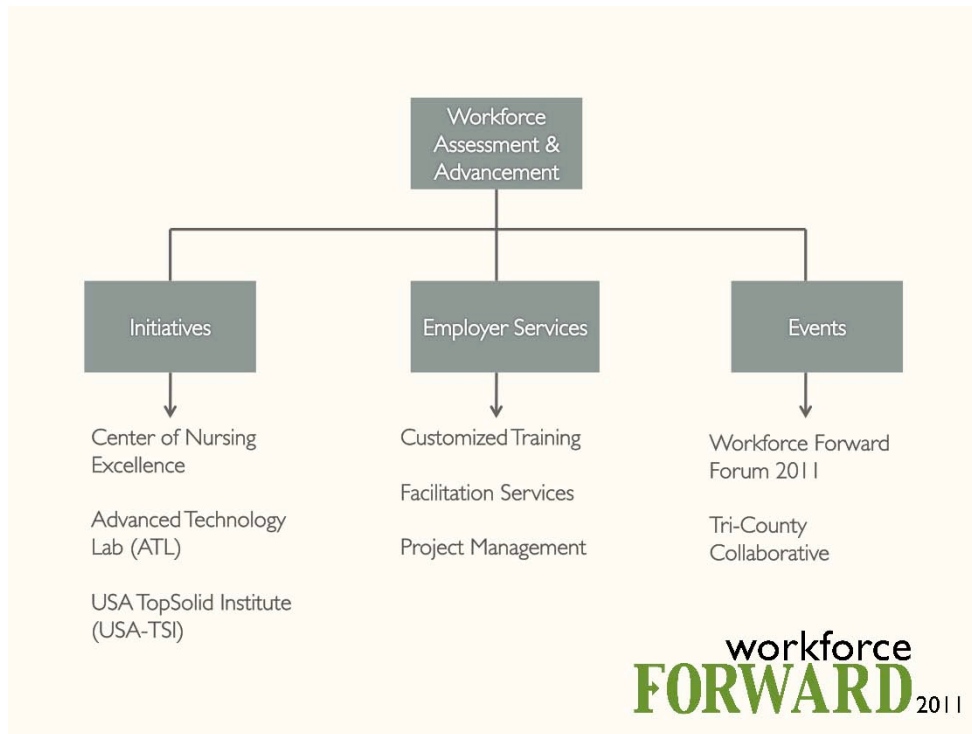
Workforce @ SVHEC is committed to partnering with and serving the interests of the community through specific events.

One example of a regional event that involved many of the components of our Employer Services was the Tri-County Job Readiness Program that was a multi-county initiative created and delivered this summer in partnership with many other organizations and with employer participation. The job readiness training program was funded by stimulus funds awarded to Tri-County Community Action Agency to prepare unemployed citizens for the workplace. We were able to work with the South Central Workforce investment Board, Virginia Workforce Center, Danville and Southside Community Colleges, and IMAGO Green, LLC. To deliver an 8-week comprehensive workplace readiness training program. The program included citizens from Mecklenburg, Charlotte, and Halifax Counties as well as crucial employer support and participation.

Today's event, the Workforce Forward Forum, is an example of our commitment to focus on critical issues affecting businesses and individuals in our communities. Through educational events such as today's forum, Workforce @ SVHEC will continue to work with various workforce stakeholders to identify and deliver solutions to the ever-growing needs of this Region.

We plan for today's forum to become a regular platform for continued dialog about education, employment, and economic development.

Next Slide



Our organization is committed to continued identification and delivery of these programs to support the growth of employers in our Region and the workers they seek to employ.

Before I conclude, I would like to invite you share with you the creation of an advisory board for Workforce Assessment & Advancement.

We hope that you will get a lot of good information from today’s event. As you hear more about what we are doing at the SVHEC for our region, we invite you to consider staying actively involved in our efforts to positively effect the region’s economy. You can stay involved with us by signing up to serve on our soon to be created Workforce @ SVHEC Advisory Council. In your forum packet, you have a Stay Involved (1/2) page form inviting you to stay involved with us, I encourage you to do just that. If you are interested in helping us stay aligned with the needs of employers and the communities we serve, please complete the form anytime during today’s event and give to one of our event staff members. Thank you.

Next Slide

Workforce @ SVHEC

workforce FORWARD 2011

a forum on education, employment, and economic development



At this time, it is my pleasure to introduce our next presenter, Mrs. Patricia Thomas.

Patricia is the Chief Nursing Officer for Halifax Regional Health System and Member of the She is also a member of the SVHEC Board of Trustees.

With 30+ years of healthcare experience, Patricia is responsible for the Patient Care Services operations in a 173-bed acute care hospital and a 19-bed subacute unit.

She leads and manages approximately 260 employees, and is responsible for a multi-million dollar operating budget.

Patricia serves on the advisory board for several regional schools of nursing including Danville Regional Medical Center and Southside Virginia Community College. She is also one of the original members of the SVHEC's Center of Nursing Excellence Advisory Committee.

She serves on the Chancellor's Task Force on Nursing Education for Virginia's Community College System and the Virginia Hospital and Healthcare Association. Patricia is an Ad Hoc Consultant for Quorum Health Resources, and is a member of the American College of Healthcare Executives. Please join me in welcoming the next presenter, Mrs. Patricia Thomas.